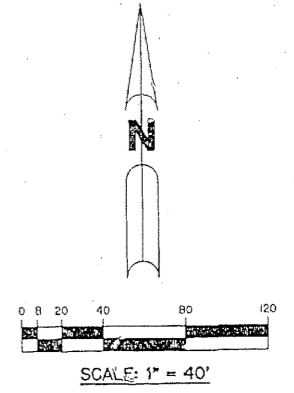
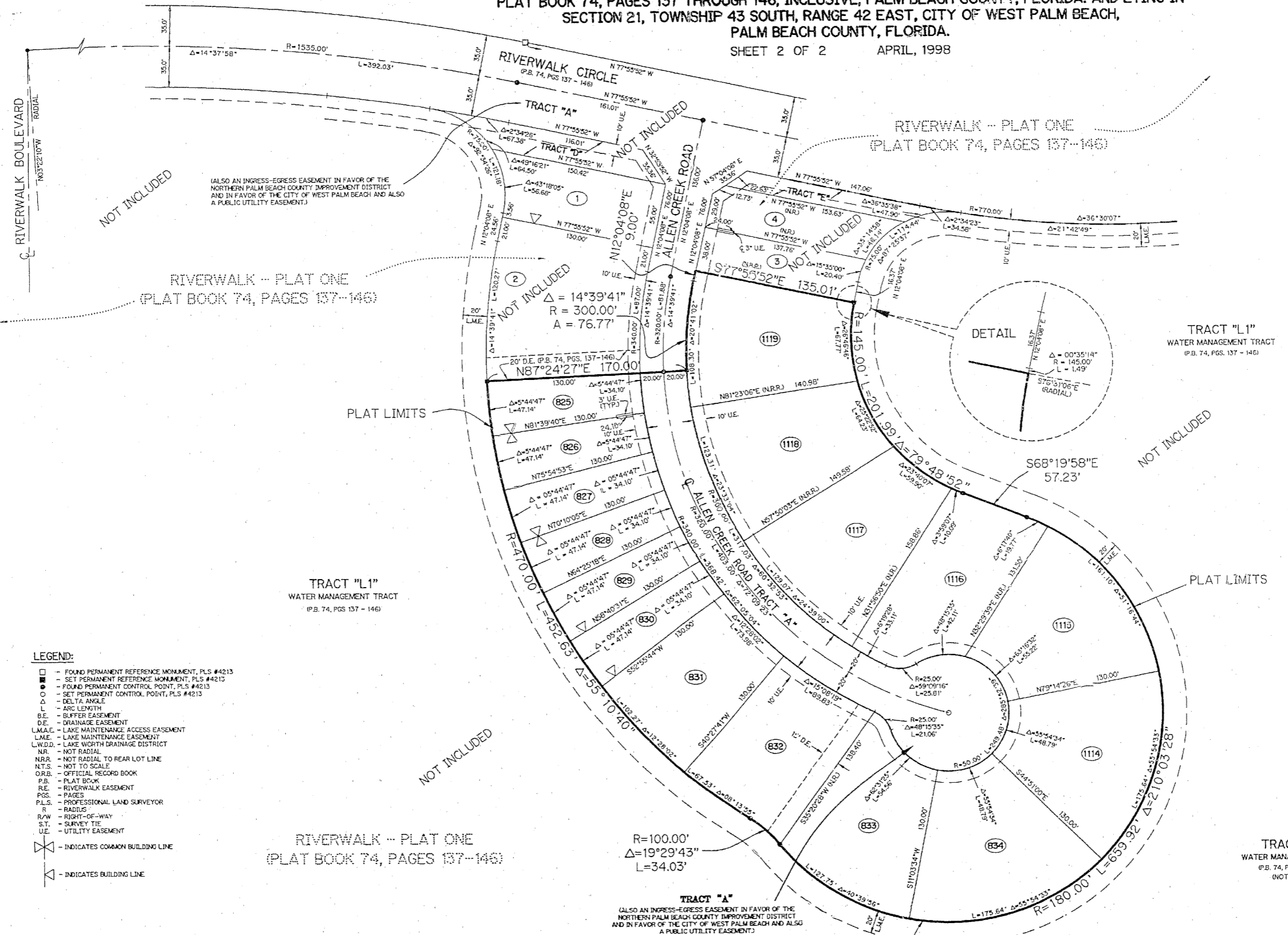


RIVERWALK - PLAT A-ONE

A PARCEL OF LAND BEING A REPLAT OF TRACT "B" OF RIVERWALK - PLAT ONE, PLAT BOOK 74, PAGES 137 THROUGH 146, INCLUSIVE, PALM BEACH COUNTY, FLORIDA, AND LYING IN SECTION 21, TOWNSHIP 43 SOUTH, RANGE 42 EAST, CITY OF WEST PALM BEACH, PALM BEACH COUNTY, FLORIDA.

SHEET 2 OF 2 APRIL, 1998



- LEGEND:**
- - FOUND PERMANENT REFERENCE MONUMENT, PLS #4213
 - - SET PERMANENT REFERENCE MONUMENT, PLS #4213
 - - FOUND PERMANENT CONTROL POINT, PLS #4213
 - - SET PERMANENT CONTROL POINT, PLS #4213
 - Δ - DELTA ANGLE
 - L - ARC LENGTH
 - B.E. - BUFFER EASEMENT
 - D.E. - DRAINAGE EASEMENT
 - L.M.A.E. - LAKE MAINTENANCE ACCESS EASEMENT
 - L.M.E. - LAKE MAINTENANCE EASEMENT
 - L.W.D.D. - LAKE WORTH DRAINAGE DISTRICT
 - N.R. - NOT RADIAL
 - N.R.R. - NOT RADIAL TO REAR LOT LINE
 - N.T.S. - NOT TO SCALE
 - O.R.B. - OFFICIAL RECORD BOOK
 - P.B. - PLAT BOOK
 - R.E. - RIVERWALK EASEMENT
 - P.G.S. - PAGES
 - P.L.S. - PROFESSIONAL LAND SURVEYOR
 - R. - RADIALS
 - R/W - RIGHT-OF-WAY
 - S.T. - SURVEY TIE
 - U.E. - UTILITY EASEMENT
 - ⊗ - INDICATES COMMON BUILDING LINE
 - ⊠ - INDICATES BUILDING LINE

THIS INSTRUMENT PREPARED BY
 PERRY C. WHITE, P.S.M. 4213, STATE OF FLORIDA
 LAWSON, NOBLE AND WEBB, INC.
 ENGINEERS PLANNERS SURVEYORS
 WEST PALM BEACH, FLORIDA